

Kia Puāwai

at St Bernadette's

"To Blossom"

The aim of our Kia Puāwai programme is to welcome all new students starting school, through a 5 Week transition to school programme on Friday afternoons from 2-2:55pm.

During each session, our nearly 5 year olds will meet and spend time with their big buddies, (Tuakana / Teina) and their future classmates.

The session will start with prayer and then our New Entrant teacher will demonstrate the focus for the session. This will either be:

RE - Religious Education

PMP - Perceptual Motor Programme

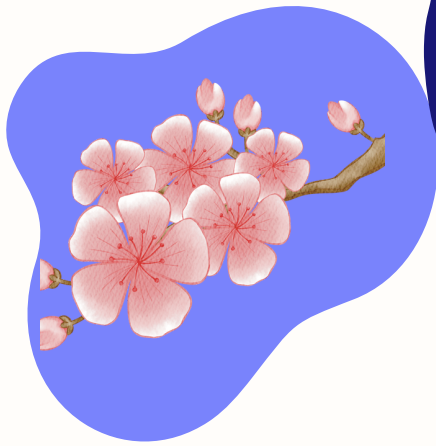
Maths - (Number, Shape, Measurement..)

Writing - (Phonics, Handwriting)

Reading - (Share a big book)

After this short demonstration, our visitors will have a chance to do Discovery Time with the children and their big buddies. Parents will then have an opportunity to meet in the staffroom together and visit with the Principal, Director of Religious Studies, our Filipino Support worker, Sister Monika or our Parish Priest.





Kia Puāwai

at St Bernadette's

"To Blossom"

WEEKS ONE TO FIVE / WEEKS SIX TO TEN	STUDENTS
SESSION ONE	RE Programme
SESSION TWO	Reading Programme
SESSION THREE	Writing Programme (Phonics, Magic Caterpillar)
SESSION FOUR	Maths Programme
SESSION FIVE	PMP Perceptual Motor Programme <input type="checkbox"/>

WEEKS ONE TO FIVE / WEEKS SIX TO TEN	PARENTS
SESSION ONE	Kelly Lambie (Director of RE Studies) and / or Parish Priest Q & A
SESSION TWO	Meet with Jo - Principal Q & A
SESSION THREE	Meet with Claire Agnew - Deputy Principal/SenCo Q & A
SESSION FOUR	Time to chat and get to know each other Q & A
SESSION FIVE	Time to chat and get to know each other Q & A Ask Julie - Office Administrator any questions regarding Stationery, Uniforms etc

Please let us know which transition programme you will be attending:

Term Two - Weeks 1-5 or Weeks 6-10

Term Three - Weeks 1-5 or Weeks 6-10

Term Four - Weeks 1-5 or Weeks 6-10

Please contact the office: admin@stbernadetteschch.school.nz or 03 342 9780

